



**LED Light Technology, LLC**  
1004 Bay Tree Lane  
Duluth, Georgia 30097

*A Female Owned Company*

Tele: 770-559-0750  
Fax: 770-783-8097  
[www.LEDLightTech.com](http://www.LEDLightTech.com)

**Construction:**

The cast aluminum components shall be low copper alloy A356. All extruded aluminum components shall be alloy 6061-T6, 6063-T5 or equal. The die-cast aluminum housing shall be designed to accommodate all electrical and optical components. Access to the optical components shall be made by moving (4) stainless steel fasteners located on the front of the luminaire. Access to the electrical components shall be made by removing (4) stainless steel fasteners located back of the luminaire housing. The lens frame shall accommodate the appropriate lens for the light output pattern needed. The lens frame shall be mechanically sealed with molded gasket for weather-tight operation on any fixed position. The luminaire shall be UL-Listed and suitable for wet locations (IP66-rated).

**Installation:**

The luminaire shall be mountable to both horizontal and vertical surfaces through a number of mounting accessories. Full 360 aiming shall be available in 5 increments. Aiming position shall be set by tightening (2) hex-head bolts on either side of the luminaire housing.

**Electrical Assembly:**

The electrical assembly shall be comprised of UL listed electronic driver and LED (Light Emitting Diode) light engine. The electronic driver shall have a constant-current output designed to operate the integral LED light engine at the required power level. The driver shall have a high temperature, flameproof plastic enclosure and shall be integrally mounted with stainless steel fasteners. The input voltage range shall be 100-277 VAC, 47 to 63 Hz with a power factor greater than 0.9 (at full load and 115VAC input). The input shall be protected against transient over-voltage. Operating temperature shall be -30 C to +60 C. The driver and the LED light engine shall be rated for operational lifetime of 50,000 hours or greater (MTBF for the driver; to 70% of initial lumens for the LED engine). The LED light engine shall be mounted to a thermally conductive medium (heat sink) and located within the sealed optical chamber.

**Cord:**

Unit furnished with 6' weather proof cord existing fixture.

<b>EPA:</b>	0.40 sqft	<b>Height:</b>	4 13/16"
<b>Weight:</b>	10 lbs	<b>Width:</b>	5 9/16"
		<b>Length:</b>	5 5/16"





**LED Light Technology, LLC**  
 1004 Bay Tree Lane  
 Duluth, Georgia 30097

*A Female Owned Company*

Tele: 770-559-0750  
 Fax: 770-783-8097  
 www.LEDLightTech.com

**Finish:**

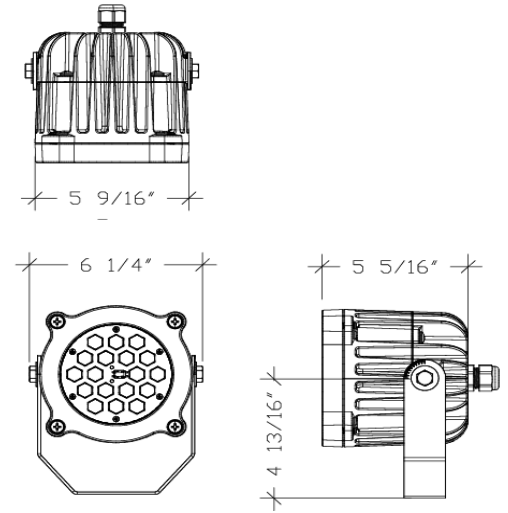
Finish shall be black polyester powdercoat electrostatically applied and hermo-cured. Luminaires shall be subjected to iron phosphate chemical pre-treatment prior to painting by immersion process.

**Listings:**

Designed and manufactured to UL & C-UL standards for wet locations, IP66-rated.

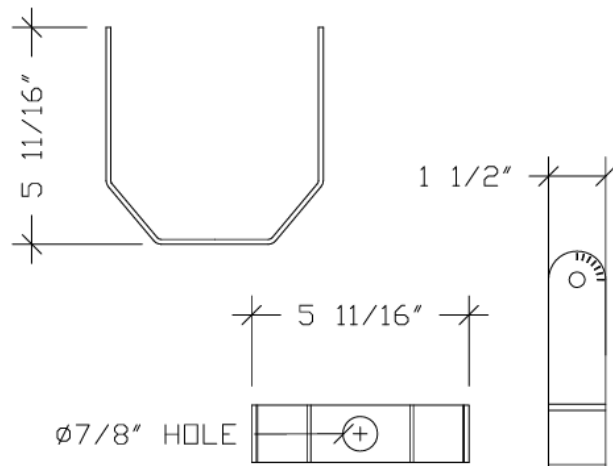
**CAUTION:**

Fixtures must be grounded in accordance with national, state, and/or local codes. Failure to do so may result in serious injury.



**Yoke Mount:**

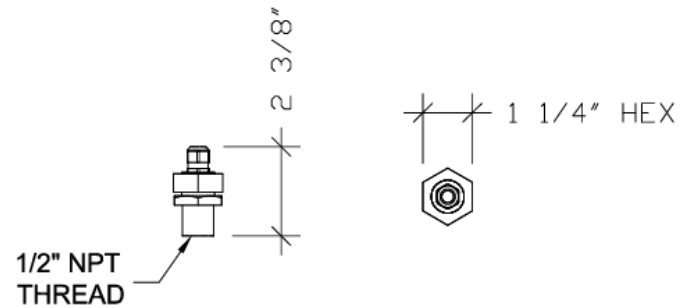
Aluminum. rotation both axes and Constructed of 6061 T6  
 Allows for full on includes angle marks for uniform adjustments.



**(Included)**

**NPT Adapter:**

Anodized aluminum body, stainless steel nut and nickel plated brass liquid tight cord grip. Allows for full rotation.



**(Included)**



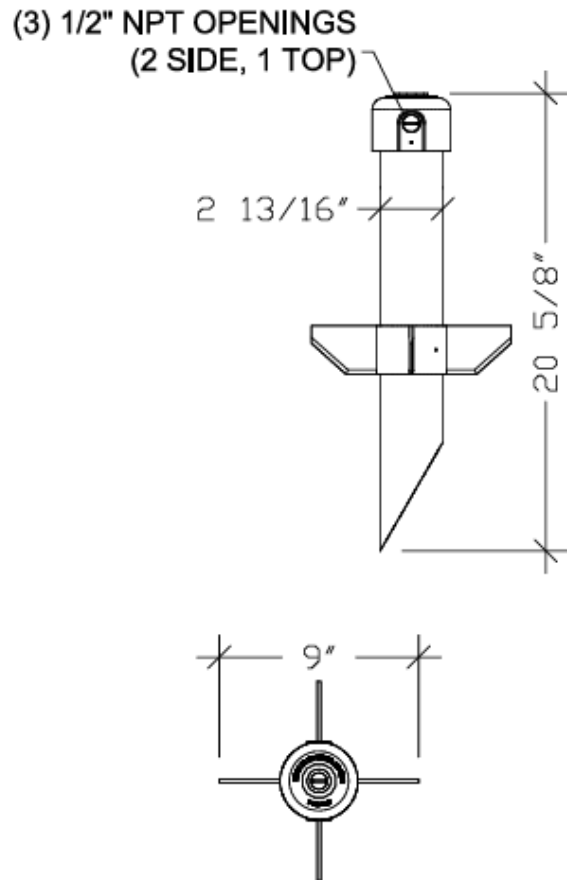
**LED Light Technology, LLC**  
1004 Bay Tree Lane  
Duluth, Georgia 30097

*A Female Owned Company*

Tele: 770-559-0750  
Fax: 770-783-8097  
www.LEDLightTech.com

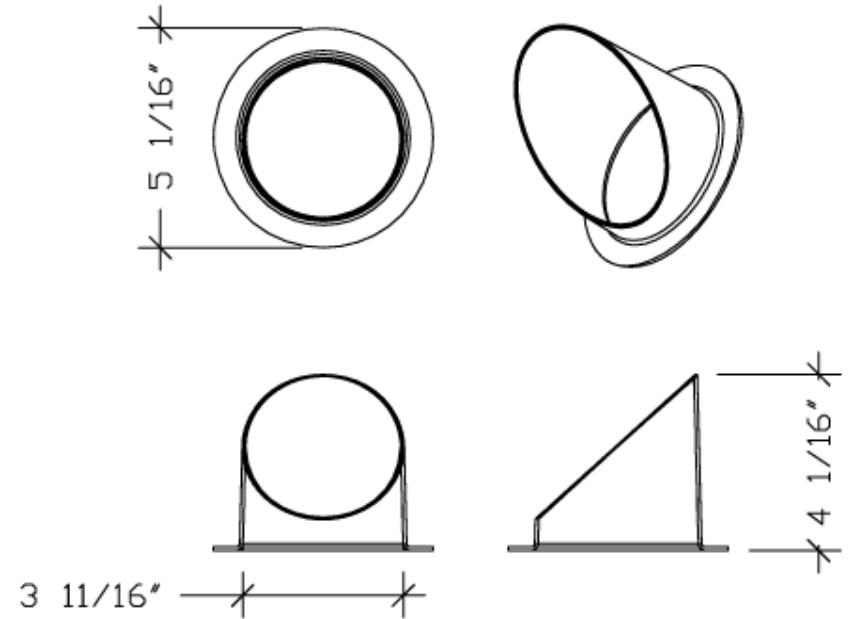
**Ground Stake:**

Durable polymer construction, black. Includes removable wiring compartment and four (4) anti-rotation fins. NPT Adapter included.



**Visor:**

Cast aluminum alloy. Seamlessly integrated





**LED Light Technology, LLC**  
 1004 Bay Tree Lane  
 Duluth, Georgia 30097

*A Female Owned Company*

Tele: 770-559-0750  
 Fax: 770-783-8097  
 www.LEDLightTech.com

**Light Distribution Patterns:**

