

# Modular 18 Low Bay

## Specifications:

**Power Source:** 120/277V AC50/60Hz

**Rated Power:** 35 Watts

**Equivalent:** 70/150 Watt HPS/HID

**Operating Temperature:** -40 to +45 deg. C

**Color Temperature:** 6500K typical

**Size:** 11.97 'L x 6.50 'H x 6.50 'W

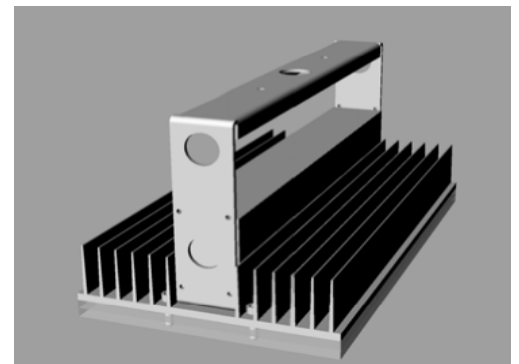
**Rated Life:** 50,000 hours, 70% of original light output

**Weight:** 2.75kg or 6.1 pounds

**Typical mounting height:** 2.5 to 12 meters (8.2 to 39.37 feet)

**Lumens:** 2,500

**Product Order Code:** LLT-3-LB-35-CW



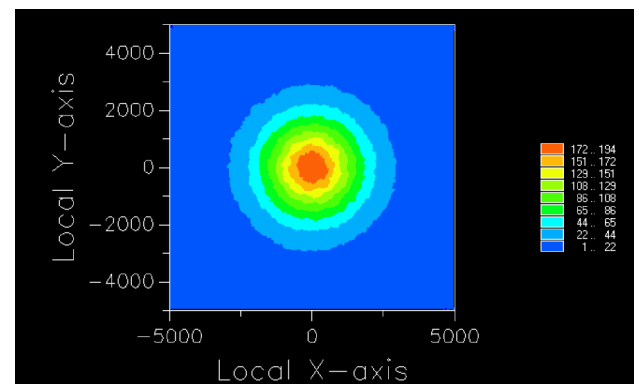
## Module 18 offers:

Constant white light source with no flicker  
No filament to break due to high vibration environment  
Ability to use LED matrix as direction indicators (visual)  
No UV and Infra Red

Instant on and off  
Reduced heat lowers air conditioning load

## Applications:

Parking area lighting Warehouse lighting  
Storage areas: Low Bay and High Bay  
Refrigerated areas  
Difficult access areas such as over escalators  
Residential lighting  
Security lighting including perimeter lighting and military bases  
Open industrial areas



Isolux Irradiance Contour

