

LED Light Tech™

LED Downlight DL40 9 Watt

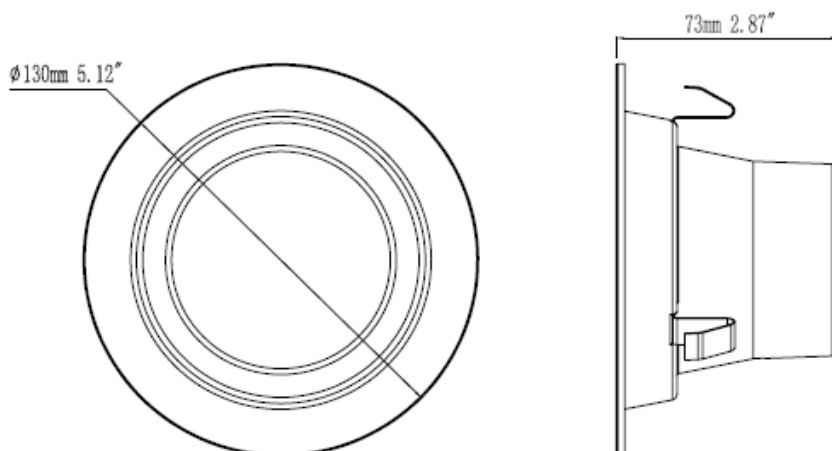
This LED Light Technology 9 Watt downlight retrofit kit adopts high lumen LM80 SMD led chip, with efficiency of 75-85 LPW. It has a V0 fire rated plastic housing with internal driver design. It is our most economical and practical downlight version. The DL40 product line is available in 4inch, 5inch and 6inch full sizes in E26 & GU24 adapter for easy installation. It is Triac dimmable (minimum to 8%) and compatible with Lutron dimmers. It is designed for general lighting applications in office, supermarket, shop, school, hotel, etc. It is also widely used for public areas, such as stairway, lobby, reception, corridors etc.

SPECIFICATIONS:

- Up to 70% energy saving compared to standard CFL
- Long lifetime of 36,000 hours
- Dimmable when using triac dimmer
- 90° wide beam angle
- CCT: 2700K, 3000K, 4000K, 5000K
- No UV/IR light
- Environment friendly, without Mercury or any other hazardous substances
- IP20 for indoor use only



DIMENSIONS:



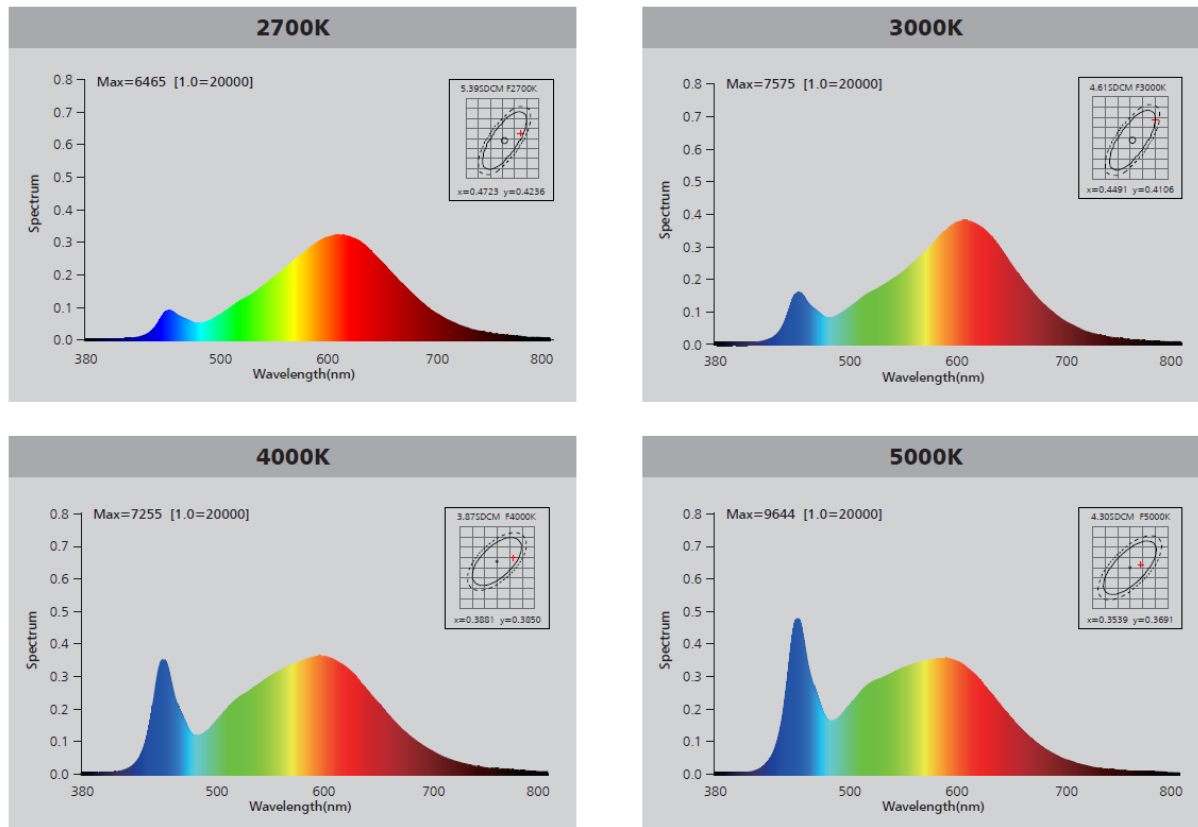
Model	Voltage	Power	Power Factor	Lumen (±5%)	Beam angle	CCT	Lifespan	CRI	Dimmable	Dimension
LLT-36-DL40-9-2700	AC120V	9W	≥0.9	650	90°	2700K	36000h	≥80	Yes	Ø130*73mm
LLT-36-DL40-9-3000	AC120V	9W	≥0.9	750	90°	3000K	36000h	≥80	Yes	Ø130*73mm
LLT-36-DL40-9-4000	AC120V	9W	≥0.9	760	90°	4000K	36000h	≥80	Yes	Ø130*73mm
LLT-36-DL40-9-5000	AC120V	9W	≥0.9	780	90°	5000K	36000h	≥80	Yes	Ø130*73mm

Rated Wattage	Electrical Classification	Ingress Protection	Operating Temp	Operating Humidity	Storage Temp
9W	II	IP20	-20°C-45°C	0-90%	-20°C-65°C

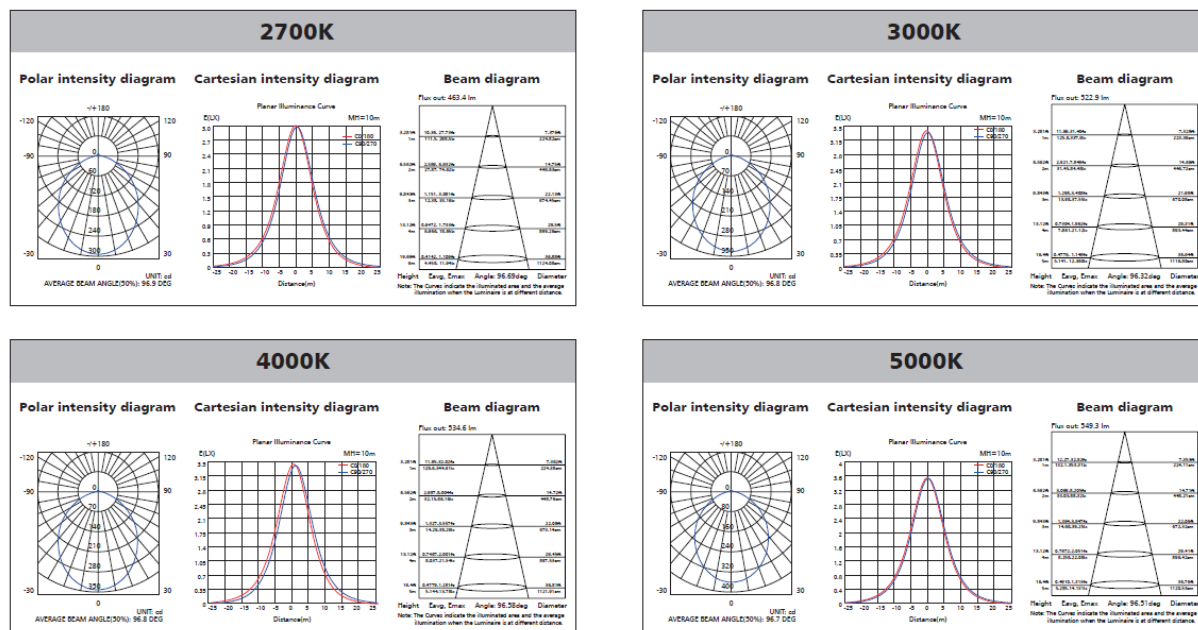
Driver data	DIM
Input rated Voltage	AC120V
Frequency	60Hz
Input Voltage	AC90-140V
Efficiency	≥84%
Total load Wattage	9W±1W
Power Factor	≥0.9
Rated input current	≤0.08A
Full load output Voltage	DC33-38V
Rated output current	210mA
Output current range	210mA±6%
Power tolerance	±5%
Current output tolerance	±6%
Dimming range	8%-100%
Dimmer	Triac dimmers
Withstand voltage	AC3750V
Short circuit protection	PASS
Over voltage protection	PASS
Over temperature protection	PASS



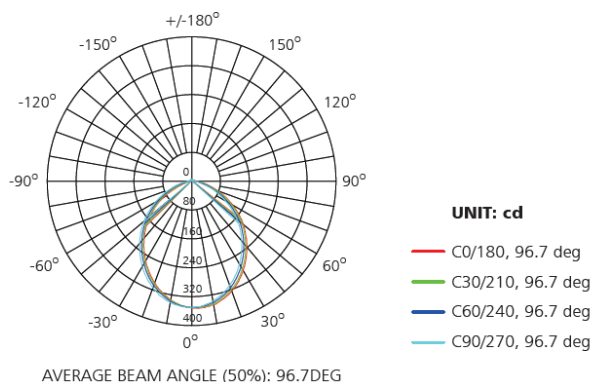
Spectral Distribution



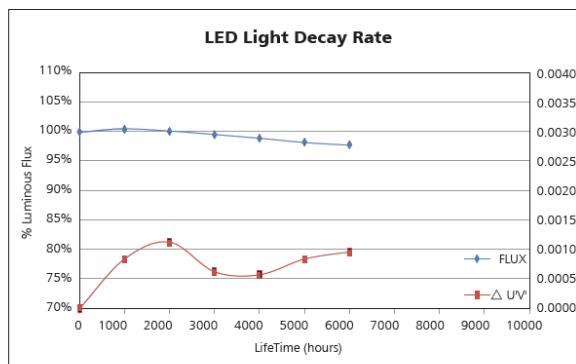
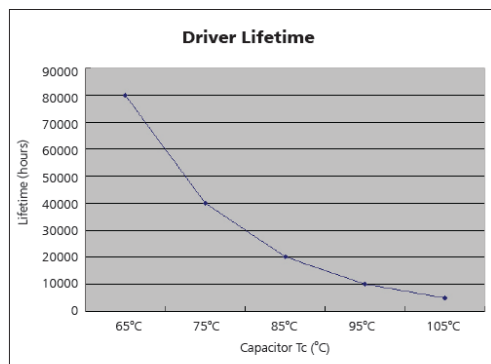
Photometric Diagram



Polar Diagram Comparison

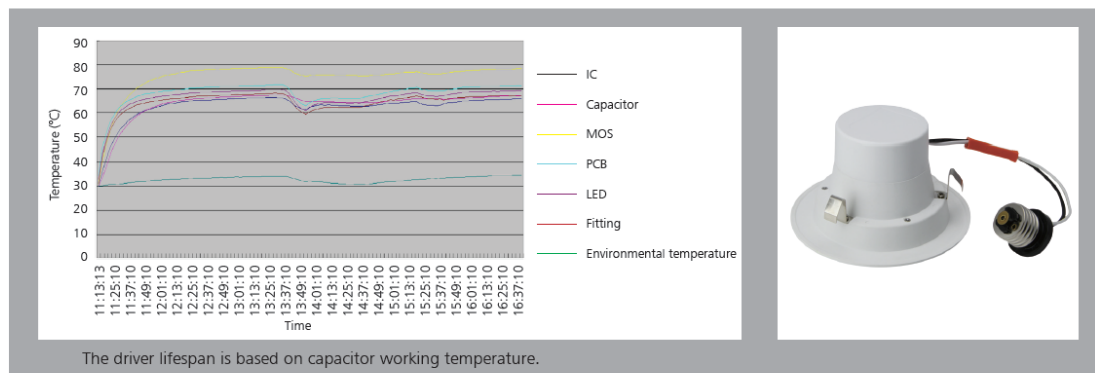


Driver lifetime & LED light decay rate

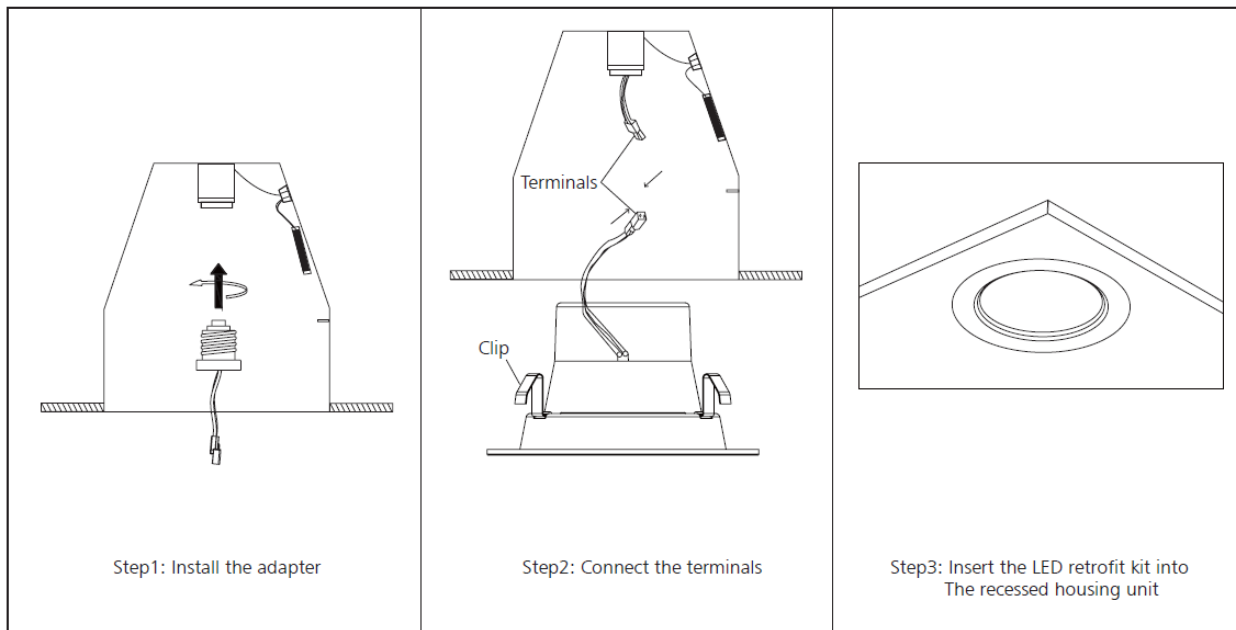


Temperature

- The testing is operated at 25°C
- The lifetime of capacitor, minimum of 5,000 hours if operated at 105°C, will be doubled whenever the temperature drops 10°C. Working at 75°C or below, the lamp can achieve its maximum lifetime of 40,000 hours.
- The highest withstand temperature of IC, MOS could be 120°C
- The highest withstand temperature of LED junction temperature is 150°C



Installation



PRODUCT ORDER CODE:

Product Order Code Example: LLT-36-DL40-9-2700

LLT	36	DL40	9		
				CCT	Base
				2700	GU10
				3000	E26
				4000	
				5000	